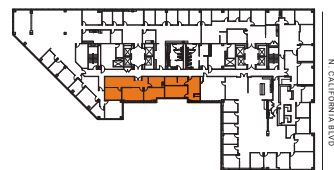
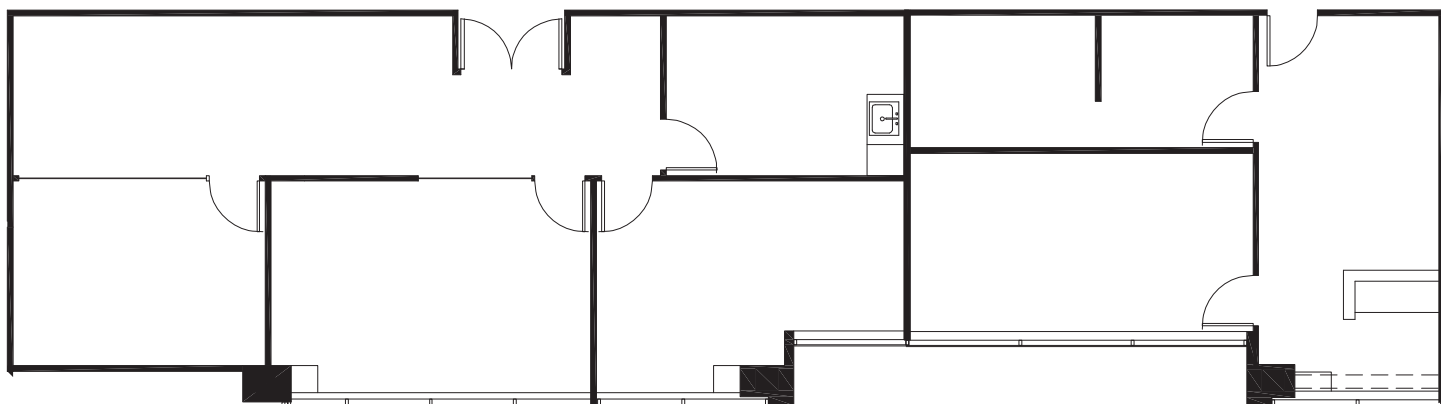




**SUITE 1005+1030**  
**±2,254 RSF**

# CALIFORNIA PLAZA



**PLEASE CONTACT THE LEASING BROKERS FOR MORE INFORMATION**

**BRECK LUTZ**  
925.974.0109  
blutz@ngkf.com  
CA RE LICENSE #00936859

**DANNY BARTZ**  
925.974.0231  
dbartz@ngkf.com  
CA RE LICENSE #01971819

