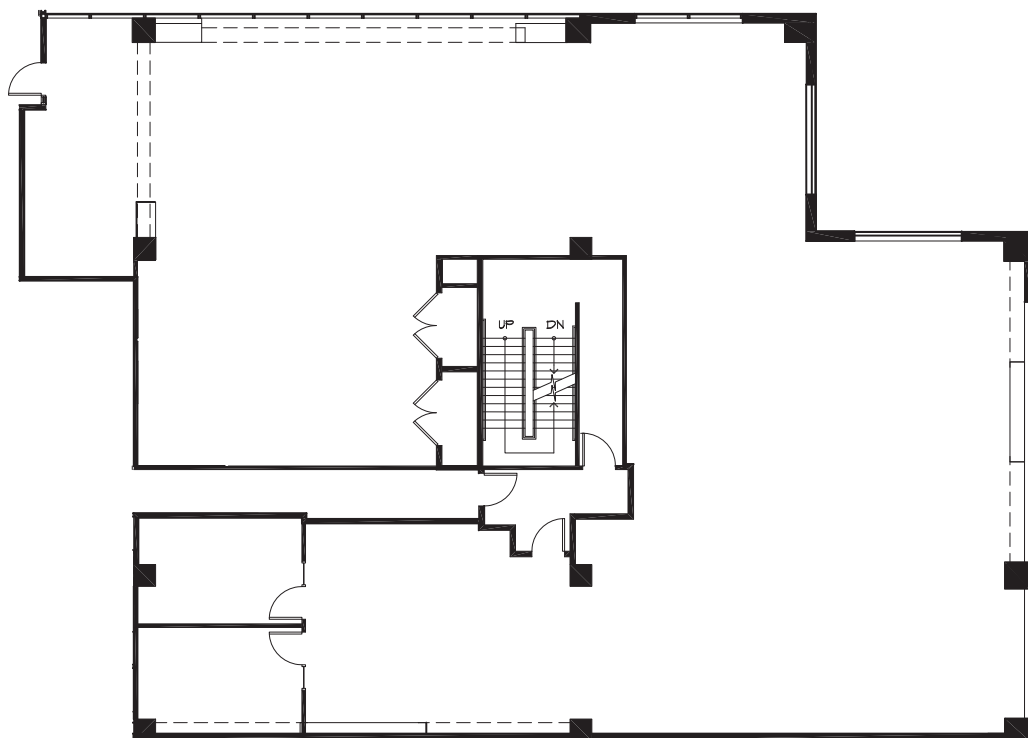




SUITE 301
±6,596 RSF

CALIFORNIA PLAZA



PLEASE CONTACT THE LEASING BROKERS FOR MORE INFORMATION

BRECK LUTZ
925.974.0109
blutz@ngkf.com
CA RE LICENSE #00936859

DANNY BARTZ
925.974.0231
dbartz@ngkf.com
CA RE LICENSE #01971819

 **Newmark
Knight Frank**