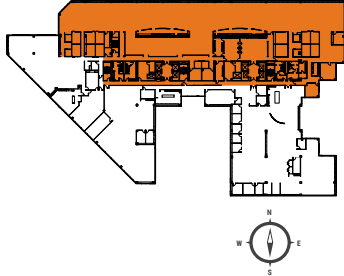
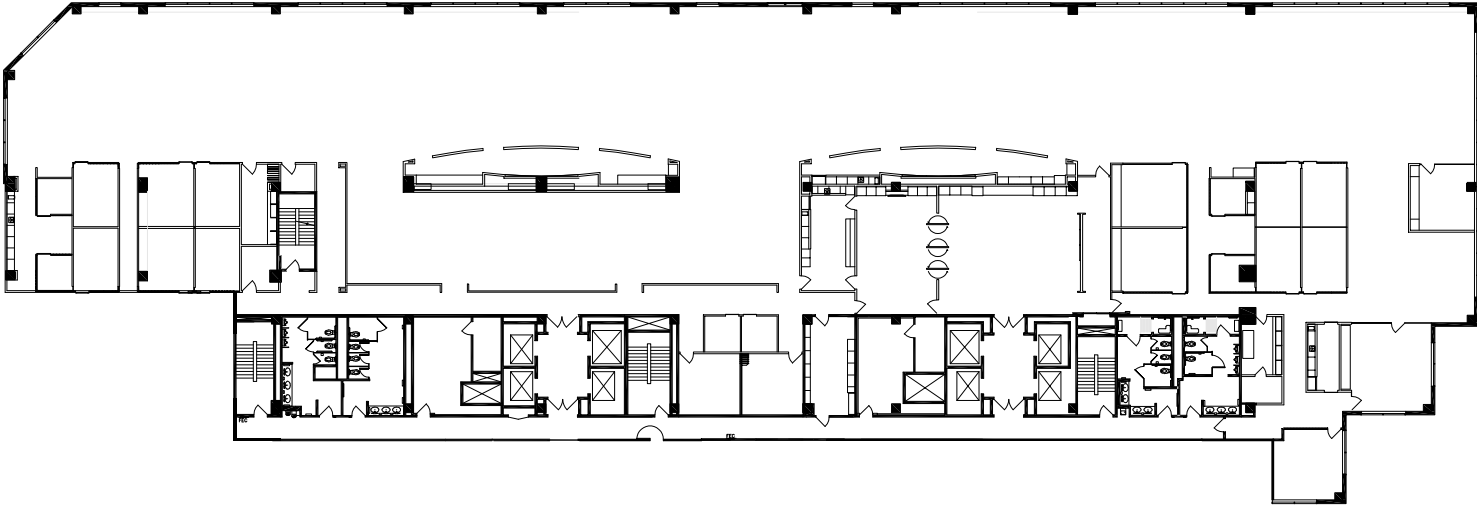





**SUITE 450**  
**±31,210 RSF**


# CALIFORNIA PLAZA



**PLEASE CONTACT THE LEASING BROKERS FOR MORE INFORMATION**

 **CLICK HERE FOR VIRTUAL TOUR**

**BRECK LUTZ**  
925.974.0109  
 [blutz@ngkf.com](mailto:blutz@ngkf.com)  
CA RE LICENSE #00936859

**DANNY BARTZ**  
925.974.0231  
 [dbartz@ngkf.com](mailto:dbartz@ngkf.com)  
CA RE LICENSE #01971819



*The distributor of this communication is performing acts for which a real estate license is required. The information contained herein has been obtained from sources deemed reliable but has not been verified and no guarantee, warranty or representation, either express or implied, is made with respect to such information. Terms of sale or lease and availability are subject to change or withdrawal without notice. January 2021*