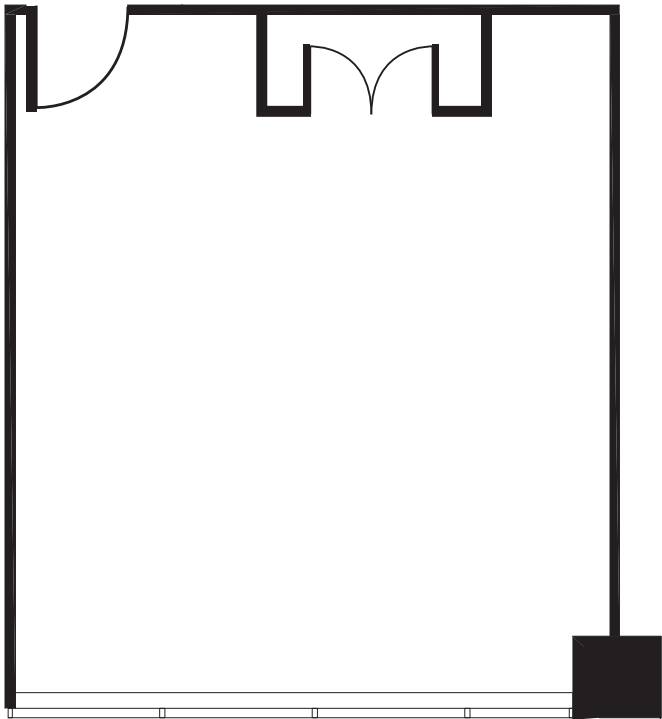




**SUITE 530**  
**±567 RSF**

# CALIFORNIA PLAZA



**PLEASE CONTACT THE LEASING BROKERS FOR MORE INFORMATION**

**BRECK LUTZ**  
925.974.0109  
blutz@ngkf.com  
CA RE LICENSE #00936859

**DANNY BARTZ**  
925.974.0231  
dbartz@ngkf.com  
CA RE LICENSE #01971819



*The distributor of this communication is performing acts for which a real estate license is required. The information contained herein has been obtained from sources deemed reliable but has not been verified and no guarantee, warranty or representation, either express or implied, is made with respect to such information. Terms of sale or lease and availability are subject to change or withdrawal without notice. Sept 2019*