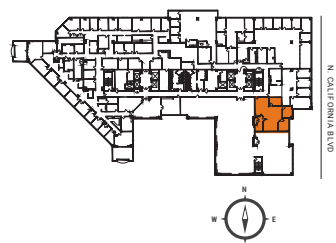
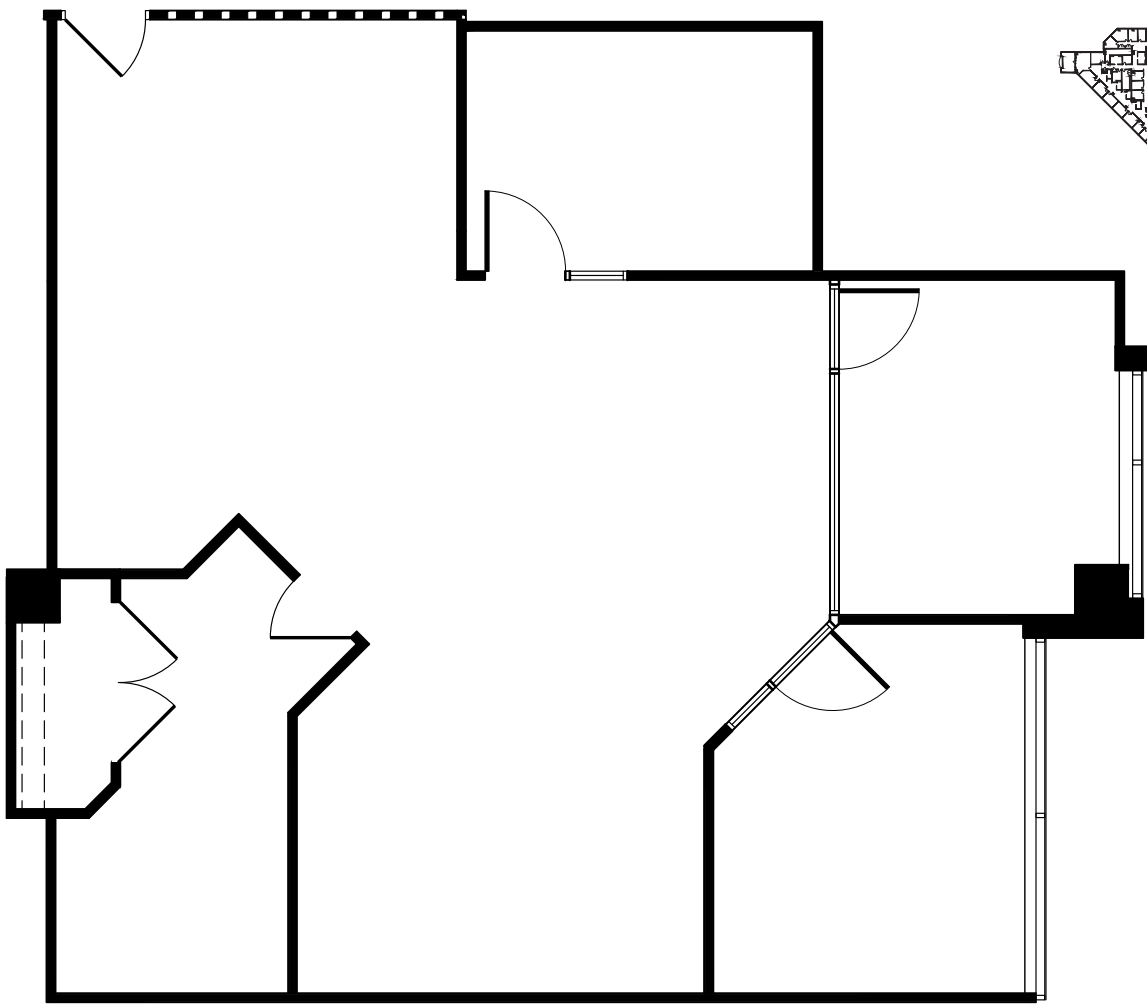





SUITE 810
±1,657 RSF


CALIFORNIA PLAZA



PLEASE CONTACT THE LEASING BROKERS FOR MORE INFORMATION

 **CLICK HERE FOR VIRTUAL TOUR**

BRECK LUTZ
925.974.0109
 breck.lutz@nmrk.com
CA RE LICENSE #00936859

DANNY BARTZ
925.974.0231
 danny.bartz@nmrk.com
CA RE LICENSE #01971819



The distributor of this communication is performing acts for which a real estate license is required. The information contained herein has been obtained from sources deemed reliable but has not been verified and no guarantee, warranty or representation, either express or implied, is made with respect to such information. Terms of sale or lease and availability are subject to change or withdrawal without notice. January 2021